



WUYOU VALVES & HARDWARE GROUP COMPANY

YANCHENG TONGSHANG VALVE MANUFACTURING PLANT

YANCHENG DINGSHENG VALVE MANUFACTURING PLANT

—— The First mover on QA & QC





Content

- [Company View](#)
- [Innovative Technology](#)
- [Advanced Manufacturing](#)
- [Quality Control](#)
- [International Marketing](#)
- [Products](#)
- [Advertise for Agency](#)
- [Contact Us](#)



Company View

- **WUYOU VALVES & HARDWARE COMPANY** is the only global sole agent for trading all the products for Yancheng Tongshang Valve Manufacturing Plant and Yancheng Dingsheng Valve Manufacturing Plant which have over 40 years OEM production experiences. Our product has continuously 20 years export to European, Middle East, and Asia-Pacific as well as occupied huge market shares in domestic market and ranking top 10 in China.
- Our company's own brand of "DGV" is the top famous brand in China. WUYOU valves & hardware Company holds the only right for group company's international and domestic trading towards to the global markets



[Back to content](#)



Company View



Yancheng Tongshang Valve
Manufacturing Plant



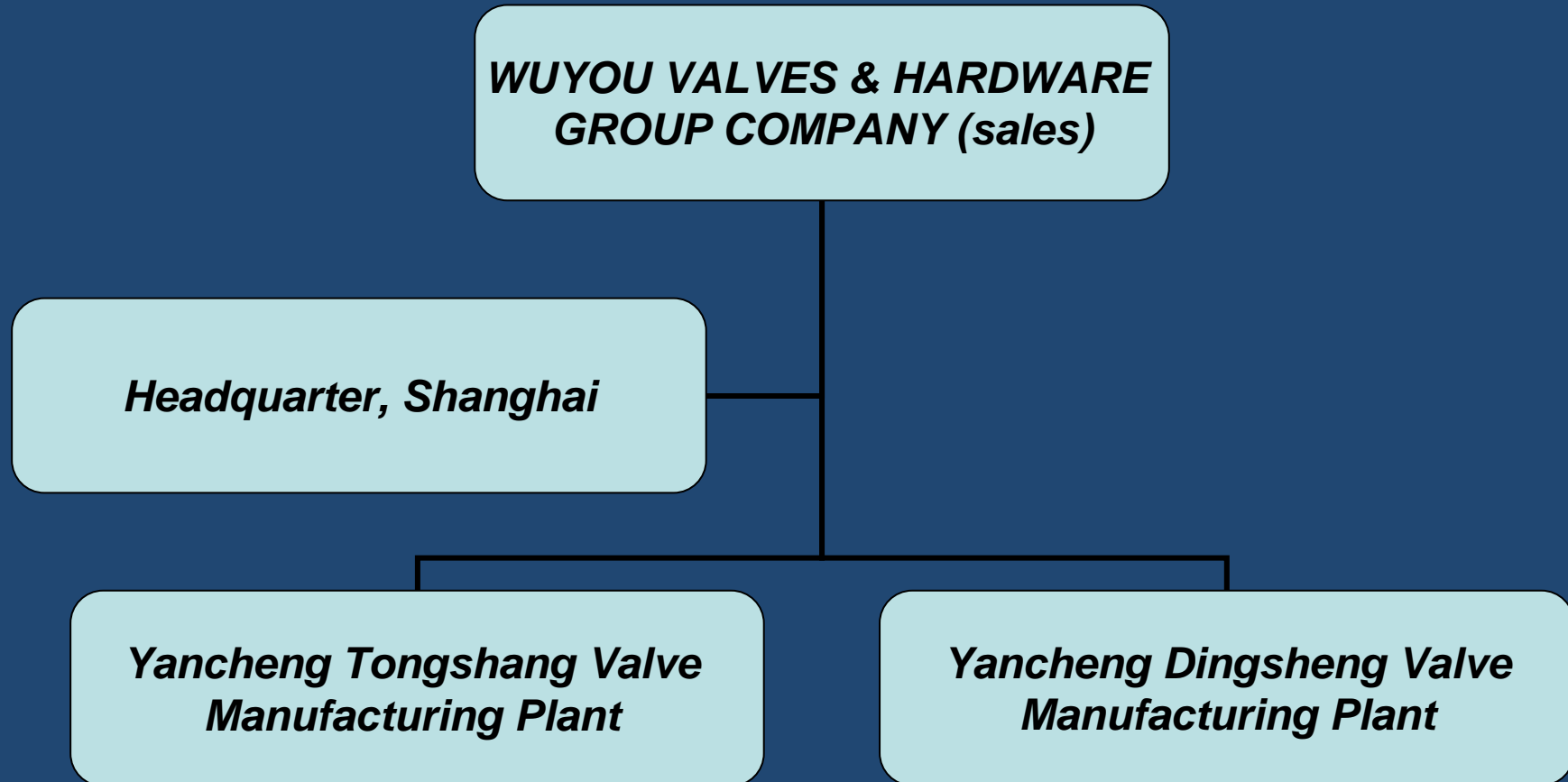
Yancheng Dingsheng Valve
Manufacturing Plant

- The products of WUYOU Group Company is producing by two factories, Yancheng Tongshang valve manufacturing plant and Yancheng Dingsheng manufacturing plant, both are specialized in manufacturing different valves products, such as Gate, Globe and Check, ball and butterfly Valves.
- All products conform to standards as API, ANSI, ASTM, NACE, ISO, EN, BS, DIN, MSS SP, etc. and are widely used for Oil & Gas, Offshore platform, Refinery, Chemical and Petrochemical, Power Generation, Water and Waste Water Treatment industries.

[Back to content](#)



Company View

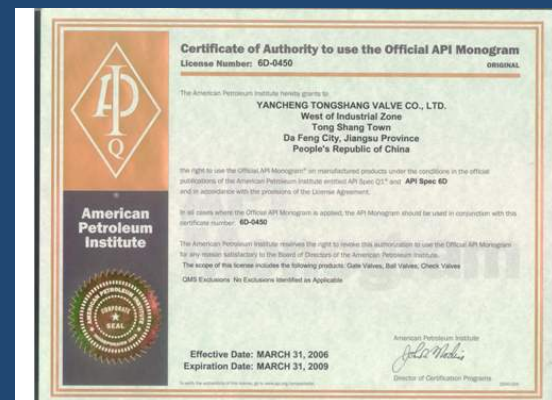
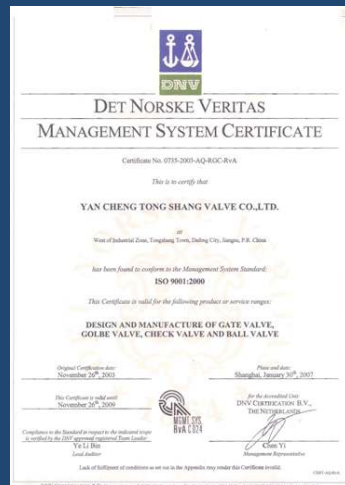




Company View

- Wuyou Valves & Hardware Group Company has implemented strict quality assurance system based on international standards. Both of the 2 manufacturing plants are audited and approved by famous inspection companies like DNV, and certified by ISO9001:2000, PED/CE, API6D.
- API 6D
- ISO 9001: 2000
- PED/CE
- Other certificates from National end users

[Back to content](#)





Innovative Technology

- With high educated and well trained engineers, using the latest CAD & CAM system, three dimensional system and limited elementary analysis in the factories, Wuyou Group Company keeps developing innovative designs and products, such as fully welded underground ball valves, forged one piece body top entry ball valves, high temperature metal to metal seat ball valves, etc.
- Wuyou Group Company supplies the customers not only commodity valves with high quality, but also full package project valves with technical solutions and value added service.

[Back to content](#)





Advanced Manufacturing



- Modern numeric control machining equipment to achieve the high quality of valve internal.



- Massive pressure testing facilities are used to guarantee the sealing performance of each valve.

- Ultrasonic cleaning equipment and automatic painting system to improve the visual looking of the valves. Our factories are producing “beautiful” valves.

[Back to content](#)





Quality Control



- On every procedure from raw material input to the final valve out, we have intensive quality inspection and quality control. Non-Destructive tests such as Ultrasonic test, Magnetic Particle test, Dye-penetrant test, Radiographic test are widely used. All valves and materials have good traceability.
- With the rapid expansion of production capacity and the continuous optimization of workflow as well as quality management system, Wuyou Group Company is ushering in a new round of development opportunities.





Quality Control

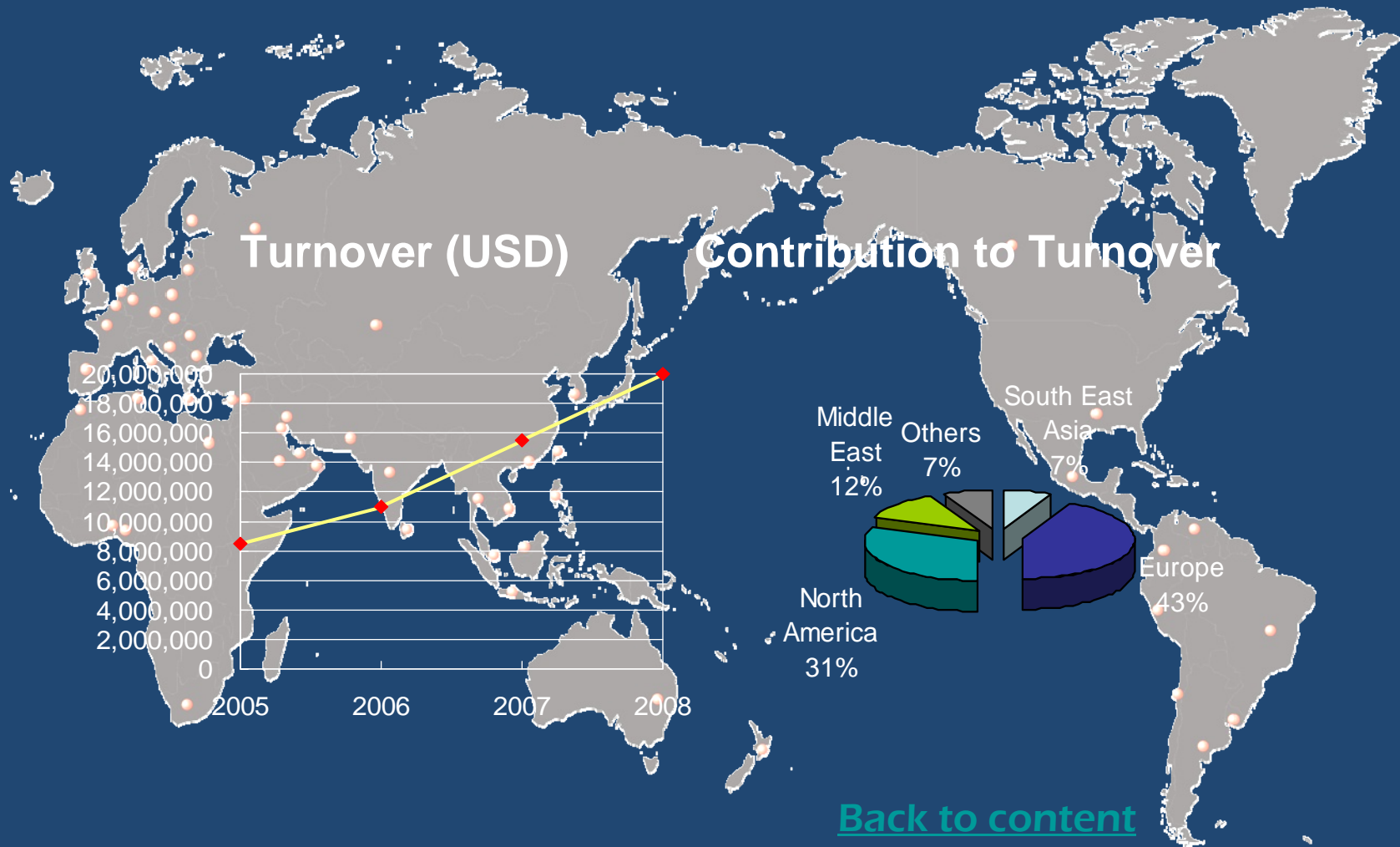
- Wuyou Group Company has performed the “Total Quality Management (TQM)” to ensure 100% satisfaction of our customer.
- We keep all the details and documents in procedure for each valves in the QA&QC brochure, which is strictly conformed to ISO9001 quality control system,
- Our principles on QA & QC ensure us to avoid and detect any quality problems in design and manufacturing.
- The third party inspection after production is welcome.





International Marketing

- DGV valves of Wuyou Group Company are exported to more than 50 countries and areas.





International Marketing

VIP Customer

Electrical Power

- ALSTOM POWER
- NEM
- BABCOCK BORSIG
- ABB
- STONE & WEBSTER
- GE
- HP VALVES

Oil & Chemical Industry

- REPSOL-YPF
- PEMEX
- PDVSA
- ONGC
- STA TOIL
- NIOC / NIGC
- EXXON MOBIL
- PER TAMINA
- TEXACO
- SASOL
- KNPC / KOC
- BP
- BASF
- DOW CHEMICAL
- SONATRACH

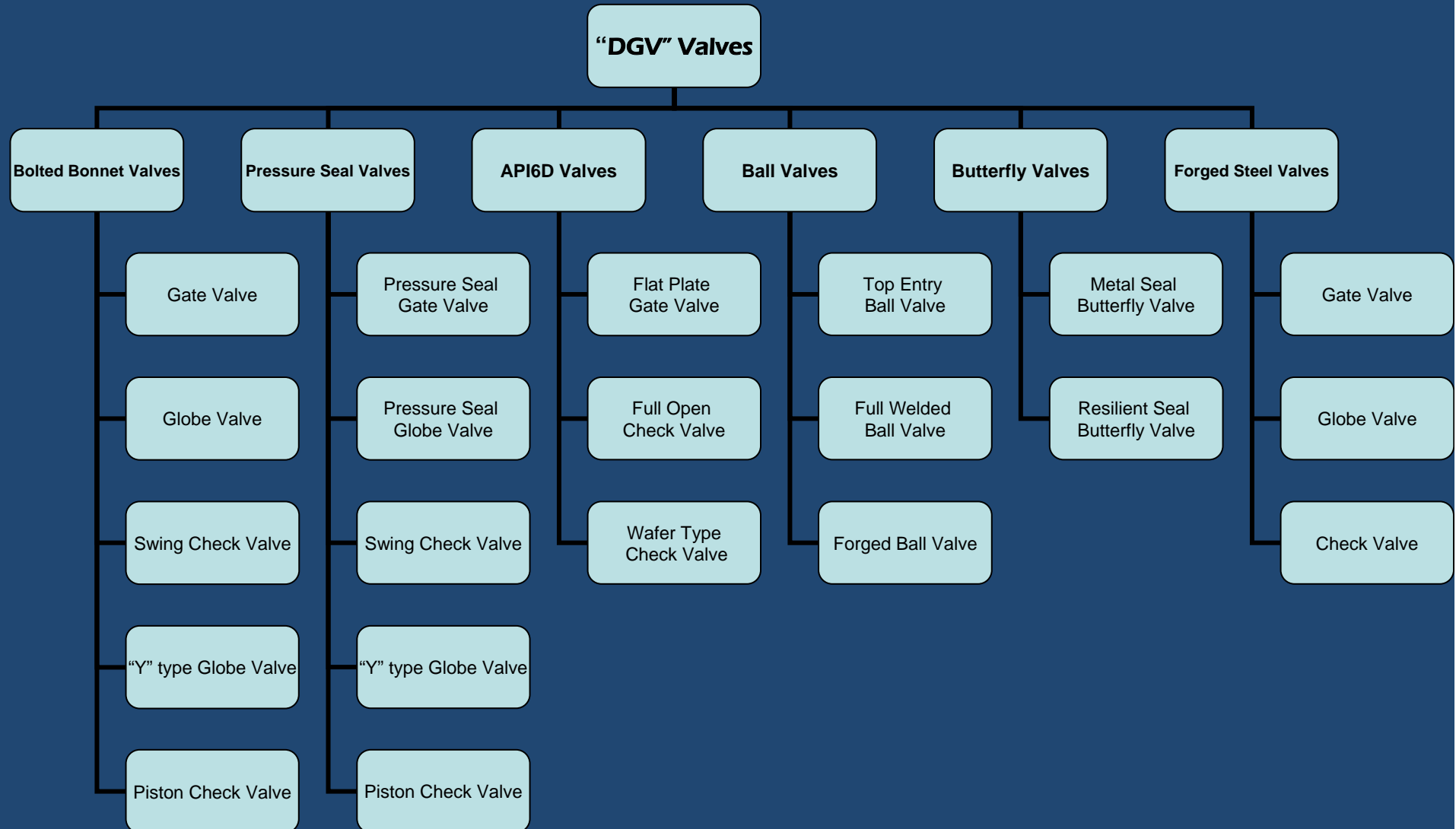
Engineering Project

- INTECSA - UNDE
- INITEC
- TECNICAS REUNIDAS
- FOSTER WHEELER
- JGC
- CHYODA
- HITACHI ZOSEN
- TOYO
- MHI
- SAMSUNG
- LG
- TEHCNIP
- LURGI
- TECNIMONT
- BECHTEL
- LINDE
- SIEMENS
- EIL
- LARSEN & TO UBRO
- TECHNIP





Products





Products

*Main Material
for our valves & parts*

ASTM MATERIAL	CHEMICAL ANALYSIS %								MECHANICAL PROPERTIES				CAST STEEL FOR GENERAL USE
	C MAX.	Mn	P MAX.	S MAX.	Si MAX.	Cr	Mo	Ni	R kg/mm ²	S kg/mm ²	A %	Σ %	
A 216-WCB	0.3	máx. 1	0.04	0.045	0.6	0.5	0.2	0.5	49.2-66.7	25.4	22	35	CARBON AND ALLOY STEELS FOR LOW TEMPERATURE SERVICES
A 216-WCC	0.25	máx. 1.2	0.04	0.045	0.6	0.5	0.2	0.5	49.2-66.7	28	22	35	
A 352-LCA	0.25	máx. 0.7	0.04	0.045	0.6	0.5	0.2	0.5	49.2-59.7	21	24	35	
A 352-LCB	0.3	máx. 1	0.04	0.045	0.6	0.5	0.2	0.5	45.7-63.2	24.6	24	35	
A 352-LCC	0.25	máx. 1.2	0.04	0.045	0.6	0.5	0.2	0.5	49.2-66.8	28	22	35	
A 352-LC1	0.25	0.5-0.8	0.04	0.045	0.6	-	0.45-0.65	-	45.7-63.2	24.6	24	35	
A 352-LC2	0.25	0.5-0.8	0.04	0.045	0.6	-	-	23	49.2-66.8	28	24	35	
A 352-LC4	0.15	0.5-0.8	0.04	0.045	0.6	-	-	45	49.2-66.8	28	24	35	
A 352-LC9	0.13	0.9	0.04	0.045	0.45	0.5	0.2	8.5-10	59.8	52.7	20	30	
A 217-WC1	0.25	0.5-0.8	0.04	0.045	0.6	0.5-0.8	0.45-0.65	-	45.7-63.2	24.6	24	35	ALLOY STEELS FOR HIGH TEMPERATURE SERVICES
A 217-WC4	0.05-0.2	0.5-0.8	0.04	0.045	0.6	0.5-0.9	0.45-0.65	0.7-1.1	49.2-66.8	28	20	35	
A 217-WC5	0.05-0.2	0.4-0.7	0.04	0.045	0.6	1.0-1.5	0.9-1.2	0.6-1	49.2-66.8	28	20	35	
A 217-WC6	0.05-0.2	0.5-0.8	0.04	0.045	0.6	2.0-2.75	0.45-0.65	-	49.2-66.8	28	20	35	
A 217-WC9	0.05-0.18	0.4-0.7	0.04	0.045	0.6	1.1-5	0.9-1.2	-	49.2-66.8	28	20	35	
A 217-WC11	0.15-0.21	0.5-0.8	0.02	0.015	0.3-0.8	1.1-5	0.45-0.65	-	56.2-73.8	35	18	45	
A 217-C5	0.20	0.4-0.7	0.04	0.045	0.75	4-6.5	0.45-0.65	-	83.3-80.8	42.2	18	35	
A 217-C12	0.20	0.35-0.65	0.04	0.045	1	8-10	0.9-1.2	-	63.3-80.8	42.2	18	35	
A 217-CA15	0.15	1.00	0.04	0.04	1.5	11.5-14	0.5	1	63.3-80.8	45.7	18	30	
A 182-F6a	0.15	1.00	0.04	0.03	1	11.5-13.5	-	0.5	59.7	38.6	18	35	STAINLESS STEELS FOR CORROSIVE, LOW AND HIGH TEMPERATURE SERVICES
A 351-CF3	0.03	1.50	0.04	0.04	2.00	17-21	0.5	8-12	49.2	21	35	-	
A 351-CF8	0.08	1.50	0.04	0.04	2.00	18-21	0.5	8-11	49.2	21	35	-	
A 351-CF3M	0.03	1.50	0.04	0.04	1.5	17-21	2-3	9-13	49.2	21	30	-	
A 351-CF8M	0.08	1.50	0.04	0.04	1.5	18-21	2-3	9-12	49.2	21	30	-	
A 351-CF8C	0.08	1.50	0.04	0.04	2	18-21	0.5	9-12	49.2	21	30	-	
A 182-F304	0.08	2	0.045	0.03	1	18-20	-	8-11	52.7	21	30	50	
A 182-F304L	0.035	2	0.045	0.03	1	18-20	-	8-13	49.2	17.5	30	50	
A 182-F316	0.08	2	0.045	0.03	1	16-18	2-3	10-14	52.7	21	30	50	
A 182-F316L	0.035	2	0.045	0.03	1	16-18	2-3	10-15	49.2	17.5	30	50	HIGHLY ALLOYED CORROSIVE RESISTANCE
A 182-F321	0.08	2	0.045	0.03	1	17 min.	-	9-12	52.7	21	30	50	
A 182-F347	0.08	2	0.045	0.03	1	17-20	-	9-13	52.7	21	30	50	
A 351-CN7M (Alloy 20)	0.07	1.5	0.04	0.04	1.5	2-3	27.5-30.5	27.5-30.5	43.5	17.6	35	-	
A 351-CD 4MCu (Duplex)	0.04	1	0.04	0.04	1	17.5-22.5	4.75-6	4.75-6	70.3	49.2	16	-	
A 494-N-12MV (Hastelloy-B)	0.12	1	0.04	0.03	1	26-30	-	-	53.4	28	6	-	NI-RESIST
A 494-CW-12MV (Hastelloy-C)	0.12	1	0.04	0.03	1	16-18	-	-	50.6	28	4	-	
A 494-M-35-1 (Monel)	0.35	1.5	0.03	0.03	1.25	-	-	-	45.7	17.6	25	-	STELLITE
ASTM A 439-D2C	2.9	1.8-2.4	0.08	-	1.3	0.5 max	-	21-24	40.7	19.7	20	-	
AWS A5.13-ECr-A	0.7-1.4	2	Fe5	W3-6	2	25-32	1	3	Co - remainder	W - 3-6	-	-	



Products

- **Cast Steel Gate Valve**



Size: 2" ~ 60";

Class: 150 ~ 2500;

OS&Y, Rising Stem

Bolted Bonnet

Flexible Wedge

By Pass (On Request)

Locking Device (On Request)

Extended Bonnet for Cryogenic Service (On Request)

[Back to content](#)



Products

- Flat-plate Gate Valve



Size: 2" ~ 40";
Class: 150 ~ 900;
Single disc or double disc
Diversion hole type or non diversion hole

[Back to content](#)



Products

- **Pressure Seal Gate Valve**



Size: 2" ~ 60";

Class: 150 ~ 2500;

OS&Y, Rising Stem

Bolted Bonnet

Flexible Wedge

By Pass (On Request)

Locking Device (On Request)

Extended Bonnet for Cryogenic Service (On Request)

[Back to content](#)



Products

- **Cast Steel Globe Valve**



Size: 2" ~ 24";

Class: 150 ~ 1500;

OS&Y, Rising Stem

Bolted Bonnet

Conic Disc

Impact Handwheel (On Request)

Locking Device (On Request)

Extended Bonnet for Cryogenic Service (On Request)

[Back to content](#)



Products

- **Pressure Seal Globe Valve**



Size: 2" ~ 24";

Class: 600 ~ 2500;

Pressure Sealed Bonnet

Conic Disc

Impact Handwheel (On Request)

Locking Device (On Request)

Extended Bonnet for Cryogenic Service (On Request)

[Back to content](#)



Products

- **Cast Steel Swing Check Valve**



Size: 2" ~ 36"
Class: 150 ~ 1500
Bolted Cover
Swing Disc Type
Internal or External Hinge Pin
Lever & Weight (On Request)

[Back to content](#)



Products

- **Pressure Seal Swing Check Valve**



Size: 2" ~ 24";

Class: 600 ~ 2500;

Pressure Sealed Bonnet

Absolute Bonnet Joint Leak Proof

Stellited Sealing Surface

Swing Type Disc Design

[Back to content](#)



Products

- Wafer Check Valve



Size: 2" ~ 36"

Class: 150 ~ 1500

Dual Plate or Single Plate

Wafer Type or Lugged Type

Available With Flange Ends

API594 Standard

[Back to content](#)



Products

- Bellow Seal Gate & Globe Valve



Size: 2" ~ 24";

Class: 150 ~ 300;

Stellite Sealing Face

Special treatment to the stem

Double sealing structure

[Back to content](#)



Products

- Forged Gate, Globe & Check Valve



Size: 1/2" ~ 4";

Class: 150 ~ 2500;

**Bolted Bonnet, Welded Bonnet, or Pressure Sealed Bonnet
Flanged, Butt-Welded, Socket Welded, or Threaded Ends**

[Back to content](#)



Products

- **Floating Ball Valve**



Size: 1/2" ~ 12"

Class: 150 ~ 600

Floating Ball, Full & Reduced Bore

Anti-Static Device

Blow-out Proof Stem

Fire Safe Design

Optional Locking Device

[Back to content](#)



Products

- **Trunnion Mounted Ball Valve**



Size: 2" ~ 60"

Class: 150 ~ 1500

Trunnion Mounted Ball, Full & Reduced Bore

Anti-Static Device

Blow-out Proof Stem

Double Block & Bleed

Fire Safe Design

Emergency Sealant Injection

ISO Top Flange

[Back to content](#)



Products

- **Metal Seated Ball Valve**



Size: 2" ~ 24"

Class: 150 ~ 1500

Metal to Metal Seat

Forged Steel Body

Floating & Trunnion Mounted Ball

Anti-Static Device

Blow-out Proof Stem

High Temperature Service

Leakage Rate Class V

[Back to content](#)



Products

- **Top Entry Trunnion Mounted Ball Valve**



Size: 2" ~ 30"

Class: 150 ~ 750

Top Entry, One Piece Body

Trunnion Mounted Ball, Full & Reduced Bore

Anti-Static Device

Blow-out Proof Stem

Fire Safe Design

Emergency Sealant Injection

ISO Top Flange

[Back to content](#)



Products

- **Full Welded Ball Valve**



Size: 2" ~ 30"

Class: 150 ~ 2500

Fully Welded Forged Steel Body

Trunnion Mounted Ball, Full & Reduced Bore

Anti-Static Device

Blow-out Proof Stem

Self Relieving Seat

Double Block and Bleed

Fire Safe Design

Butt Weld End or Flanged End

Extended Stem for Underground Use (On Request)

[Back to content](#)



Products

- **Resilient Seated Butterfly Valve**



Size: DN50 ~ DN1500 (2" ~ 60")

Class: 150 ~ 600

Wafer, Wafer-Lug or Double Flange Ends

Concentric/ Double Eccentric Disc

EPDM, NBR, PTFE, or VITON Seat

Blow-out Proof Shaft

Low Torque, Long Life Cycle

ISO Top Flange

[Back to content](#)



Products

- **Metal Seated Butterfly Valve**



Size: DN50 ~ DN900 (2" ~ 36")

Class: 150 ~ 600

Wafer, Wafer-Lug or Double Flange Ends

Triple Off-Set/ Double Eccentric Disc

Metal to Metal Seated

Blow-out Proof Shaft

ISO Top Flange

[Back to content](#)



Advertise for Agency

- With the development of petrochemical, gas, water-treatment, energy industries, our DGV valves are in a new development procedure. So according to our global marketing strategy, we would like to cooperate with qualified agency and distributor as the long-term partner based on double-win principle.
- We will bring to our agent:
 - Quality products
 - Good brand image
 - Reasonable price structures
 - Guaranteed delivery
 - Financial supportage
 - So on...

[Back to content](#)

Advertise for Agency

- **We believe that the combination of our support and your market expansion will acquire great benefits for both of us!**



[Back to content](#)



Contact us

- Website: www.ycvalve.com
- Email: marketing@ycvalve.com
- Tel: 0086-21-61355068
- Fax: 0086-21-61355069
- 24 Hour Hotline: 0086-13041601666
- HQ. Address: Room 1804, Lujiabang Road 1378,
Shanghai, China
- Manufacturing plant Address:
 1. Yancheng Tongshang Valve Manufacturing Plant
East industrial zone, Nanyang Town, Dafeng, Jiangsu Province, China
 2. Yancheng Dingsheng Valve Manufacturing Plant
Kaiyuan Road, Industrial zone, Dafeng, Jiangsu Province, China

[Back to content](#)



WUYOU VALVES & HARDWARE GROUP COMPANY

Thanks!

- The aim of Wuyou Group Company is to supply “zero defect” and “long reliable service life” valves to minimize the “Total Ownership Costs” for all the customers, EPCs and end users.
- With strict scientific quality control and management system in the factories, Wuyou Group Company is willing and able to sincerely serve for the global energy industry and to establish a sustainable new world.
- We are Wuyou Group Company, the First mover on QA & QC for 21st Century!



[Back to content](#)